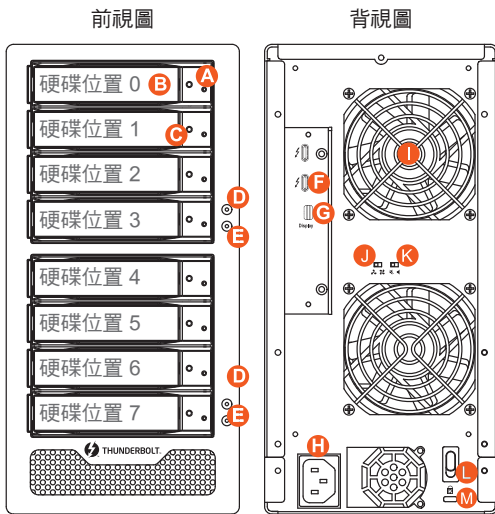


ST8-TB3 快速安裝導引

產品示意圖與配件表



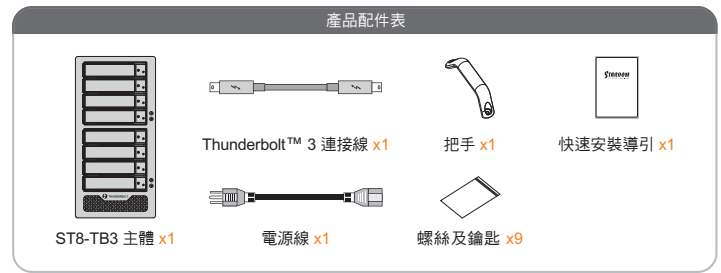
- A 硬碟讀取燈
- F Thunderbolt™ 連接埠
- K 靜音開關
- B 硬碟抽取盒把手
- G Mini DisplayPort
- L 電源開關
- C 硬碟抽取盒鑰匙孔
- H 電源插座
- M 防竊鎖孔
- D 電源指示燈
- I 風扇
- J 風扇轉速切換按鈕
- E 系統指示燈

注意：請依硬碟位置順序由上而下安裝硬碟。

V1.0 (Mar. 2018)

1

打開包裝外盒後，包裝內容應包含下列組件：



- 請先確認相關配件與產品本身是否有受損或是缺少配件，若有任何疑問，請與您的經銷商或業務人員聯絡。
- 請前往官網 (www.stardom.com.tw) 下載說明書、驅動程式以及其餘相關資源。

燈號說明

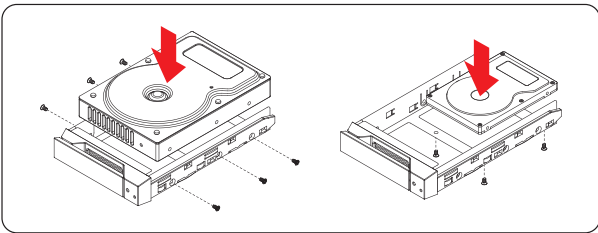
狀態	系統指示燈		硬碟狀態燈	蜂鳴器
	藍燈	紅燈		
無硬碟	恆亮	N/A	紅燈恆亮	N/A
硬碟故障	恆亮	閃爍	紅燈恆亮	YES
資料存取	恆亮	N/A	藍燈閃爍	N/A
硬碟開蓋	恆亮	N/A	藍燈恆亮	N/A
資料重建 - 來源碟	恆亮	N/A	藍燈閃爍	N/A
資料重建 - 目標碟	恆亮	N/A	藍燈閃爍	N/A
風扇故障	恆亮	閃爍	藍燈恆亮	YES
過熱	恆亮	閃爍	藍燈恆亮	YES

※ 進行資料重建時，務必關注 Marvell Storage Utility(MSU)以取得詳細資訊。

2

硬體安裝

請參照下列步驟，完成 ST8-TB3 的硬體安裝：



注意：不建議使用不同廠牌，或是同廠牌不同型號的硬碟，避免影響效能。

- 當你打開包裝後，首先請先檢查產品主體以及附件是不是有毀損或是短缺情形，如果發生產品主體及附件短缺，請立刻與您的供應商聯絡。
- 將主機置放於平穩空間上，並確認散熱風扇沒有被擋住，且四周有適當的散熱空間。(請避免接近水源或是其他容易造成產品損傷的環境)
- 請使用零件包中所附的頂針插入鑰匙孔，開啟硬碟抽取盒把手便將抽取盒取出。
- 將硬碟安裝到抽取盒上，並以零件包內附的螺絲加以固定，以避免不必要的移動對硬碟造成傷害。
- 硬碟安裝完成後，請將抽取盒平移放入主機內，並關上把手。
- 請依據您欲使用的介面，從附件包中選擇相對應的連接線，將 ST8-TB3 背面連接埠與電腦主機相對應介面連接。
- AC Power 電源線與 ST8-TB3 連接好，並將接頭插上電源插座後開機。
- 開機後，您的作業系統將會自動辨識到儲存容量；待辨識成功後，請依據您所需的儲存格式，將系統依照作業系統的指示完成格式化。待硬盤格式化完成後，便可直接使用 ST8-TB3。
- 如電腦無法辨識此一系統，請前往官網 (www.stardom.com.tw) 下載後安裝驅動程式。

3

產品使用注意事項

- 在安裝新硬碟到 ST8-TB3 之前，請先確認硬碟是沒有壞軌而且是沒有故障的，以避免資料受損。
- 當您需要關閉或移除 ST8-TB3 時，務必透過您所操作的作業系統中執行硬碟安全移除後，方可進行電源關閉的動作。
- 當系統運作時，請勿任意移除任何一顆硬碟，以免導致資料遺失。
- 如你希望將 ST8-TB3 搭配軟體或硬體 RAID 功能使用時，請先瞭解並注意你所要使用 RAID 層次及配件的特性與限制。
- ST8-TB3 在未連接 Thunderbolt™ 3 連接線時，風扇與電源指示燈皆為停止及休眠狀態，直至連接 Thunderbolt™ 連接線至電腦才會啟動風扇及電源指示燈。
- 電腦進入睡眠模式時，ST8-TB3 的風扇與電源指示燈皆為停止及休眠狀態，直至喚醒時才會啟動風扇及電源指示燈。
- 若硬碟已在其他磁碟陣列產品存取資料或設定 RAID MODE 過，建議還原成 JBOD 模式後再應用於 ST8-TB3，以避免產生無法讀取硬碟問題。
- 強烈建議除了使用 ST8-TB3 的資料儲存功能外，請針對重要資料備份到另一個儲存裝置上或遠端備份，雙重備份您重要的資料。若您儲存在 ST8-TB3 的資料損毀或遺失，STARDOM 將不負任何的責任。

感謝您使用 銳銳科技股份有限公司 的產品。

本手冊裡的資訊在出版前雖然已經被詳細確認，但實際產品規格將已出貨時為準；任何的產品規格或相關資訊更新，請您直接上 www.STARDOM.com.tw 網站查詢，或直接與您的業務聯絡窗口聯繫，本公司將不另行通知。

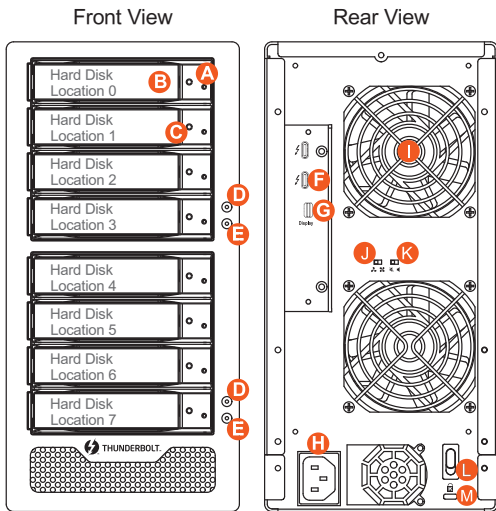
如果您對 銳銳科技 的產品有任何疑問，或是想獲得最新產品訊息、使用手冊或軟體，請您聯絡 services@stardom.com.tw，我們將儘速回覆您。

本說明相關產品內容歸 銳銳科技股份有限公司 版權所有

4

ST8-TB3 Quick Setup Guide

Product Illustration and Parts List



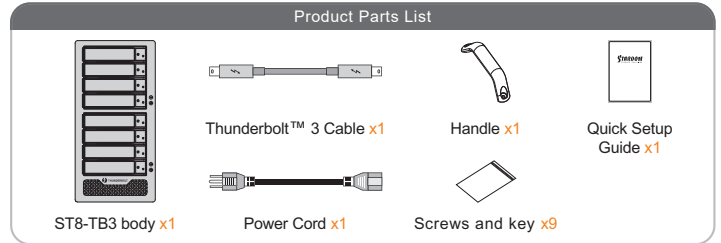
- A** HDD access light
- B** HDD enclosure handle
- C** HDD enclosure keyhole
- D** Power status light
- E** System status light
- F** Thunderbolt™ port
- G** Mini DisplayPort
- H** Power socket
- I** Fan
- J** Fan speed switch
- K** Mute switch
- L** Power switch
- M** Anti-theft lock

Note:
If you do not have 8 HDDs, please follow the above HDD number sequence to load all your in hand HDDs.

V1.0 (Mar. 2018)

1

The following items should be inside the package upon opening:



ST8-TB3 body x1 Thunderbolt™ 3 Cable x1 Power Cord x1 Handle x1 Screws and key x9 Quick Setup Guide x1

- Please check the product and accessories for any defect or missing parts. If you have any questions, please contact your product supplier.
- Please visit the official website (www.stardom.com.tw) to download user manuals, drivers and other related resources.

The Indication of HDD Status

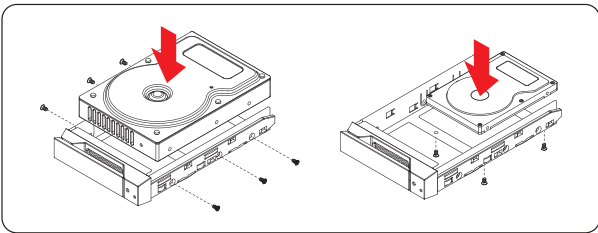
Status	System indicator Light		HDD Status Light	Buzzer
	Blue light	Red light		
No HDD detected	Always on	N/A	Red light always on	N/A
RAID failed	Always on	Flashing	Red light always on	YES
RAID failed	Always on	Flashing	Purple light always on	YES
Data access	Always on	N/A	Blue light flashing	N/A
HDD idle	Always on	N/A	Blue light always on	N/A
Rebuilding data - Source HDD	Always on	N/A	Blue light flashing	N/A
Rebuilding data - Target HDD	Always on	N/A	Blue light flashing	N/A
Fan failure	Always on	Flashing	Blue light always on	YES
Overheat	Always on	Flashing	Blue light always on	YES

※ When reconstructing data, be sure to follow the Marvell Storage Utility (MSU) for more information.

2

Hardware Installation

Please install ST8-TB3 as the following instruction.



Note: Please avoid using hard disk drives from different manufacturers or different models from the same manufacturer as this may impact system performance.

- When you open the package, please immediately check the product and included parts for any damage or missing parts. If there is a problem with the product or included parts please contact your supplier immediately.
- Place the device on a flat, even surface. Make sure that the cooling fan is not blocked and there is sufficient surrounding space for cooling. (Keep away from water or other environments that may cause product damage).
- Please insert the pin included with the parts pack into the keyhole to release the HDD enclosure handle and remove the HDD enclosure.
- Place the hard disk in the HDD enclosure and secure it in place with the included screws; this will prevent damage to the hard disk from external vibration.
- Once the hard disk is installed, slide the enclosure into the system and close the handle.
- Select the appropriate cable from the accessories pack depending on the interface. Connect the ST8-TB3 backplate connection port to the corresponding port on the computer.
- Connect the AC Power cable to the ST8-TB3. Plug the connector into the power socket then start the system.
- Your operating system will automatically detect available capacity once the device finishes booting. Once the device has been detected, please follow instructions given by the operating system and format the system. Once the hard disk has been formatted, the ST8-TB3 system can be used.
- If the computer is unable to detect the system, please install the drivers from official website (www.stardom.com.tw)

3

Important Notice

- Please make sure that the hard drives are free from bad blocks or defects prior to installation in order to avoid system crashes or data loss.
- Whenever turning off or unplugging the ST8-TB3 from your computer system becomes necessary, always remember to safely remove it from your operating system first.
- When the ST8-TB3 is connected to the computer system, it's prohibited to remove, insert or swap the hard drive while data transfer is being performed.
- If you will be incorporating either software or hardware RAID functionality to operate with the ST8-TB3, it is important to understand the RAID level and its component that will be incorporated and the precautions to take as each RAID level and component may function differently and contains various limitations.
- ST8-TB3 will go into sleep mode when Thunderbolt™ 3 cable is not connected, while fan and LED indication of ST8-TB3 will not be functioning until connecting with Thunderbolt™ 3 cable.
- When ST8-TB3 goes into sleep mode that fan and LED indication of ST8-TB3 will not be functioning, until ST8-TB3 has been reactivated.
- If HDD was used for RAID in other devices, please revert the HDD to JBOD mode using original device/software before install in ST8-TB3.
- It is highly recommended for users to back up important data contained within the drives of the ST8-TB3 on a regular basis or whenever the user feels necessary to a remote or a separate storage device. STARDOM will not be responsible for any lost of data caused during the use of the ST8-TB3 or the recovery of the data lost.

Thank you for choosing this RAIDON product.
The information provided in this manual was checked before publication, but the actual product specifications may have changed before shipping; Latest product specifications and updates can be found at www.STARDOM.com.tw or through your sales representative. No separate notifications will be provided by our company.
If you have any questions about RAIDON products or would like to receive the latest product information, instruction manuals, or firmware, please contact services@stardom.com.tw for assistance.

All product-related content in this manual are copyrighted by RAIDON TECHNOLOGY, INC.

4